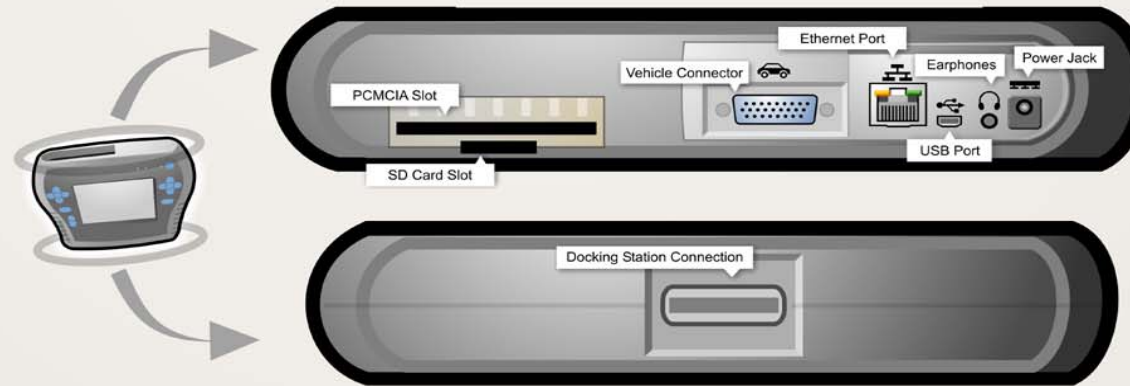


A Check package contents



Check to make sure that you have all parts pictured.

B Review connector jack locations



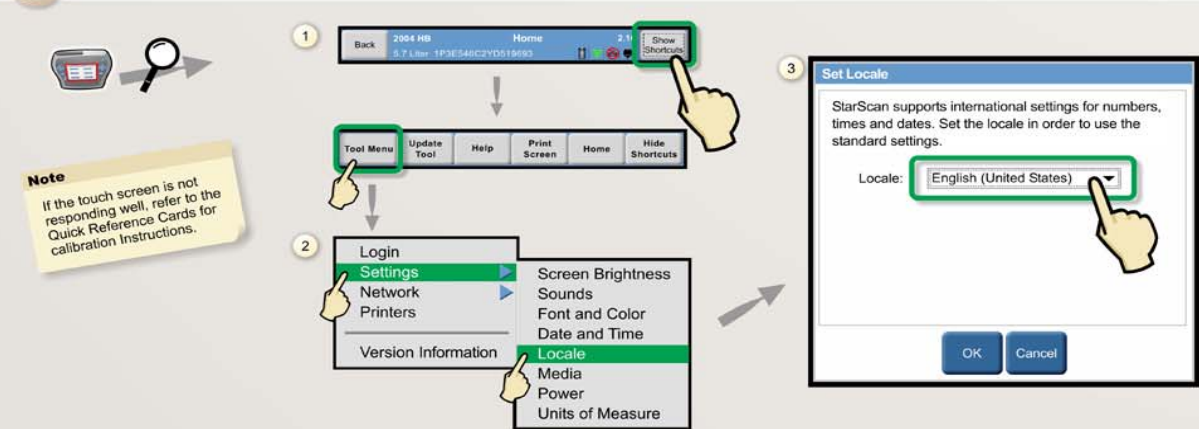
C Connect power and turn on scan tool



Note
Make sure you turn on the scan tool before charging—battery will not charge with power off.

Use power adapter until battery is fully charged. Charge time = 4 hours. To turn off the scan tool, press the power button twice.

D Set locale



Note
If the touch screen is not responding well, refer to the Quick Reference Cards for calibration instructions.

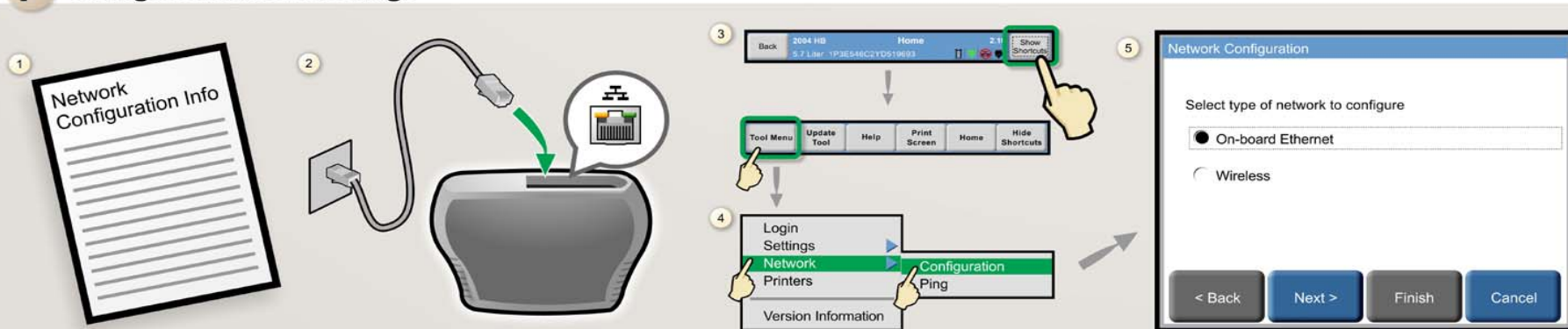
1. Touch **Show Shortcuts**, then **Tool Menu**
2. Touch **Settings**, then **Locale**
3. Touch the Locale menu to set your language and country then touch **OK**

E Set date and time



1. Touch **Show Shortcuts**, then **Tool Menu**
2. Touch **Settings**, then **Date and Time**
3. If needed, touch the correct date on the calendar
4. If needed, touch **Edit Hrs** or **Edit Min** to set the correct time
5. If needed, touch **AM** or **PM**

F Configure network settings



1. Get Network Configuration info from your dealer's Systems Coordinator.
2. Connect network cable.
3. Touch **Show Shortcuts**, then **Tool Menu**
4. Touch **Network**, then **Configuration**
5. Follow the steps in the Network Configuration Wizard.

G Find more Help/Documentation



1. Touch **Show Shortcuts**, then **Help** for online documentation
2. Refer to Quick Reference Cards for common procedures
3. Follow the tutorials on the DVD for in-depth training